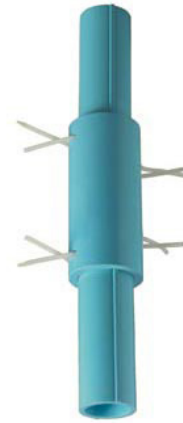


SURE-LOC RISER PIPE

Sure-Loc pipe is ideal for installing submersible pumps in water wells. It uses an innovative locking arrangement to hold the joint intact under tensile load, while the external ribs resist torsion forces, such as the torque generated when the pump starts and stops

- WRAS approved: safe for potable water
- Lightweight, easy to handle and transport
- Fast and easy to assemble and disassemble
- No curing time allows immediate pump testing
- Long life - PVC is chemical & corrosion resistant
- Low installation costs, no special tools required
- Efficient pumping due to low friction loss resulting in energy saving of up to 20%
- Smooth inner walls, no scale build up or erosion



Conforms to or exceeds the performance requirement of ASTM D 1785 Schedule 80 standard specifications for PVC pipe.

Applications: • Submersible column pipe • Pumping mains • Temporary pumping system

Outside Diameter	Nominal Diameter	Wall Thickness	Outside Dia. Over Socket	Max Depth of Installation	Max String Weight *	Max. Joint Strength	Max. Pump Capacity	Max Pump Pressure	Max Pump Discharge
mm	inch	mm	mm	m	kg	kg	H.P.	psi	lpm
48	1.5	5.08	63	145	550	860	15	423	109
60	2	5.54	81	145	740	1100	20	360	182
73	2.5	7.01	95	145	1050	1540	30	360	261
88	3	7.62	114	145	1450	2260	30	333	407
114	4	8.56	141	145	2180	3650	50	288	709
141	5	9.52	168	145	3180	4690	75	261	1123
168	6	10.97	200	145	4460	7200	100	252	1609

* Considering discharge pressure of 0.3kg/cm² (4.26 psi) at well head